

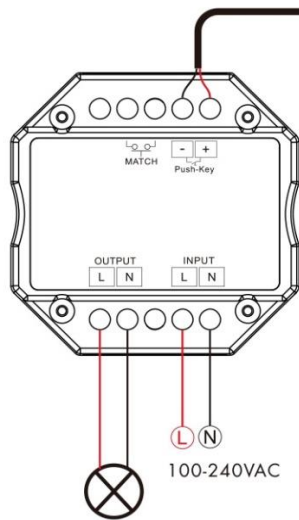
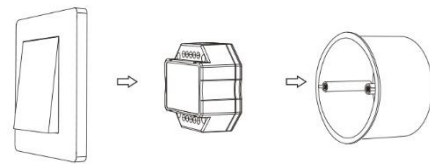
Description



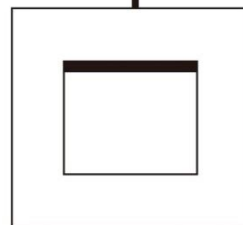
1CH RF Smart Switch module on/off

Technical Specifications

Input Voltage	100-240VAC
Output Voltage	100-240VAC
Output Current	3A max
Output Power	300-720W
dimensions: lxbxh (mm)	52x52x26mm
IP rating	IP20
RF control distance	30m
Input signal	RF 2,4GHz+push switch
Standby time	-30° to 55°C
Warranty	3 years
NOT Dimming	Just on/off
To Switch single color LED lamps & Halogen lamps	



Non-dimmable LED light



Push Switch (Optional)

Short press, turn on light.
Short press again, turn off light.

Durable – Delightfull – LED

Durable – Delightful – LED

Alltronic bv
Ringlaan 72
3630 Maasmechelen

T +32 (0)89 51 43 55
E ledsmeet@alltronic.be
W www.alltronic.be

BTW/TVA BE0444.840.218
BNP Paribas fortis BE17 0011 8812 6021
BIC GEBABEBB

