

Description

IP20

12-24V

RoHS

CE

PIR Switch (Motion Sensor)

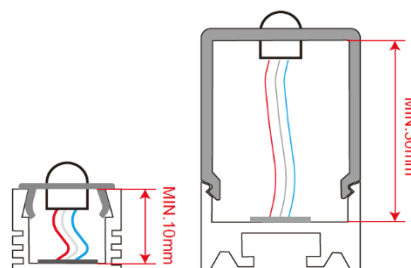
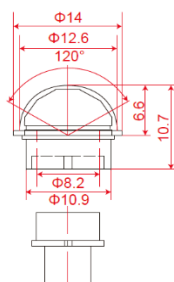
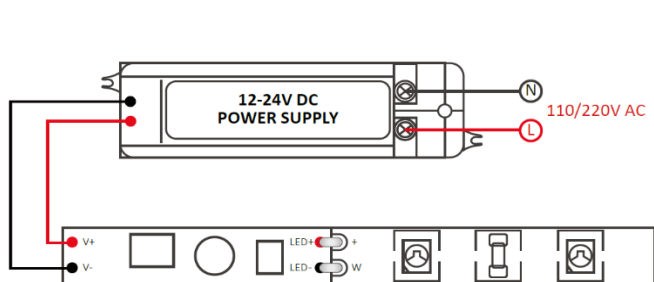
Technical Specification

Output power (W)	96W
DC Inpute (Vac)	12-24VDC
IP	20
Inpute current	8A max
cut-out size in cover: diam.	10,5mm
Detection Distance:	1,5-2meter
(can be installed in the LED-strip Profile)	
Dimension: L.x h (mm)	51x10mm
Delay time adjustable :	6-70sec
Warranty:	3 years
Packing number (pc)	1

07/2021



Connection Diagram



Durable – Delightfull – LED

Alltronic bv
Ringlaan 72
3630 Maasmechelen

T +32 (0)89 51 43 55
E ledsmeet@alltronic.be
W www.alltronic.be

BTW/TVA BE0444.840.218
BNP Paribas fortis BE17 0011 8812 6021
BIC GEBABEBB